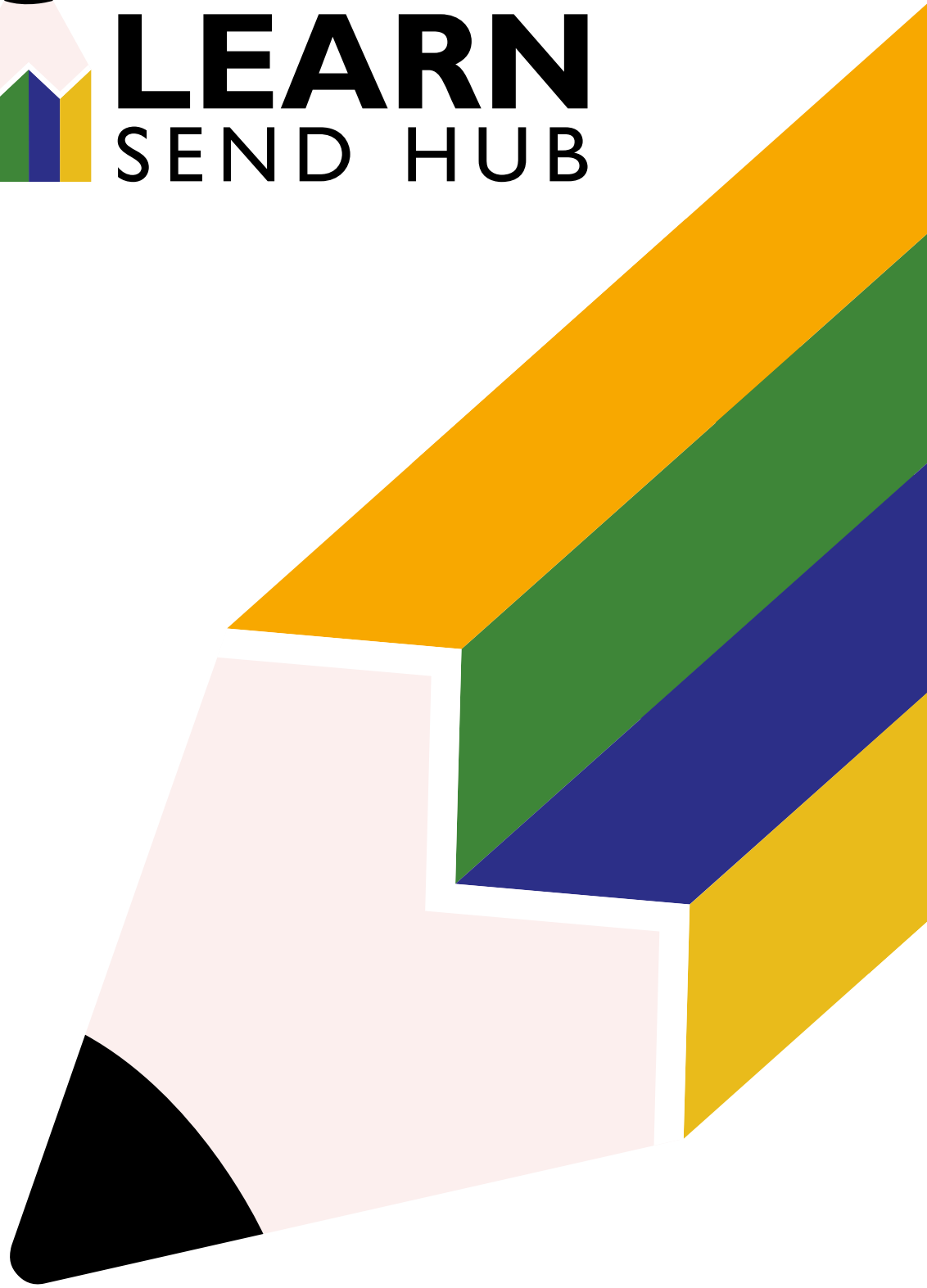


LEARN
SEND HUB



Professional Development

2024/25

Support • Enhance • Nurture • Develop

Keep in touch



Want to email?

General enquiries can be made via email to:
enquiries@learnsendhub.co.uk



Want to call?

Telephone us on:
01400 659009



learnsendhub



@LEARNSENDHub



learn-send-hub



Need to see us?

Our Address is:

Warwick House, Long Bennington Business Park,
Long Bennington, Newark, NG23 5JR

what3words:

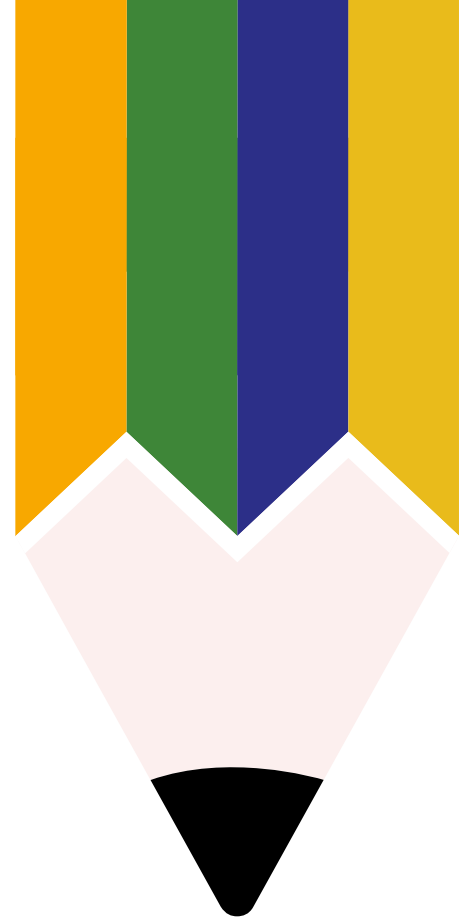
elevates.assume.engaging



Want to book?

If you would like to book on one of our fantastic courses,
please visit: www.learnsendhub.co.uk

or scan the QR code





Welcome to the CPD brochure for 2024-25 from LEARN SEND Hub

This year, we are excited to offer a blended approach to our training, ensuring accessibility for all learners.

At LEARN SEND Hub, we pride ourselves on providing tailored CPD and school support, drawing upon the expertise of our diverse team of specialist SEND and mainstream colleagues. While much of our provision is SEND-specific, our overarching goal remains consistent: to guarantee every child's access to high-quality education, both within Lincolnshire and beyond.

We provide LEARN SEND Hub centre-based programmes, delivering Continuous Professional Development throughout the year based on the national, regional and local picture. Delegate places can be booked as a whole school or as an individual. If there isn't a date available to suit you, please get in touch as we will endeavour to meet your needs.

As a proud member of the Community Inclusive Trust, an ambitious multi-academy trust serving mainstream primary and special schools across the East Midlands, we have been instrumental in shaping educational landscapes since our inception in September 2014. Our portfolio of programmes includes DfE approved SEND initiatives,

positioning us as a leading provider in the region. While our physical base is in Lincolnshire, our support extends across the East Midlands, South Yorkshire, and the Humber region.

LEARN SEND Hub is honoured to be a delivery partner of the L.E.A.D. Teaching School Hub, contributing to their SEND provision once again this academic year. Leveraging our extensive network of specialist partners, including our Director's role as Regional Lead for Whole School SEND, we are committed to meeting your CPD needs, whether at our dedicated teaching centre or directly at your school. If you're unable to find what you need within our brochure, please don't hesitate to get in touch, and we'll gladly direct you accordingly.

At LEARN SEND Hub, our training is designed to address all four broad areas of need within the Special Educational Needs and Disabilities (SEND) spectrum. To help you easily identify the focus of each training session, we've included buttons throughout this brochure, representing each area of need. Additionally, we've added an extra button specifically for leadership and management courses.



VISION & VALUES

Our Vision

To provide high quality Education for All across Lincolnshire.

In an ever-changing educational landscape, with SEND being high on the national agenda, LEARN seeks to maximise their impact through working collaboratively with a range of schools and partners. This is underpinned by our vision to improve the quality of teaching and learning for those with SEND in all settings, improving the outcomes for all. We aim to do this by harnessing expertise in SEND, inclusion, teaching, leadership and coaching, resulting in high quality impact-driven continuous professional learning for all practitioners.

Our Values

What does this look like in practice?

- Collaborative working with shared integrity, honesty, purpose, trust and respect.
- Promoting inclusivity, sharing and harnessing excellence in our local schools.
- Outward-looking aspirational partners who listen to and support local leaders.
- Enhanced pathways – training and development for SEND Leaders, teachers and support staff.
- School improvement driven through strategic leadership from consultants working collaboratively to support shared goals.
- Experts working as a shared resource across Lincolnshire and beyond.

We look forward to welcoming you!

Our training covers all four broad areas of need. To identify the area that the training relates to we have used the following buttons throughout the brochure alongside two additional buttons to indicate our Leadership and Management and High Quality Teaching courses.



Cognition
& Learning



Sensory &
Physical Needs



Social, Emotional
& Mental Health



Communication
& Interaction



Leadership
& Management



High Quality
Teaching

ROOM HIRE



LOOKING FOR A SPACE AWAY FROM YOUR SETTING?

At LEARN SEND Hub, we understand the importance of stepping away from your regular work environment to focus on your training and development. That's why we also offer convenient room hire services, providing the perfect setting for productive sessions.

Our modern, purpose-built facility is designed specifically for business needs, providing a professional and conducive environment for your training sessions or meetings.

DISCOVER OUR ROOMS:



TRAINING ROOM

Escape the distractions of your normal workplace setting in our dedicated Training Room. With a capacity for up to 50 participants, it's equipped with everything you need for effective training, including a smart screen TV, Wi-Fi access, and flexible layout options. Optional refreshments and buffet lunches available (prices available on request).



CONFERENCE ROOM

Ideal for smaller groups or 1:1 meetings, our Conference Room accommodates up to 20 attendees. Enjoy seamless presentations with a presenter screen TV, stay connected with Wi-Fi, and brainstorm ideas effortlessly with flip charts provided. Enhance your meeting with optional refreshments and buffet lunches (prices available on request).

For bookings or enquiries, contact us at enquiries@learnsendhub.co.uk

CONTENTS

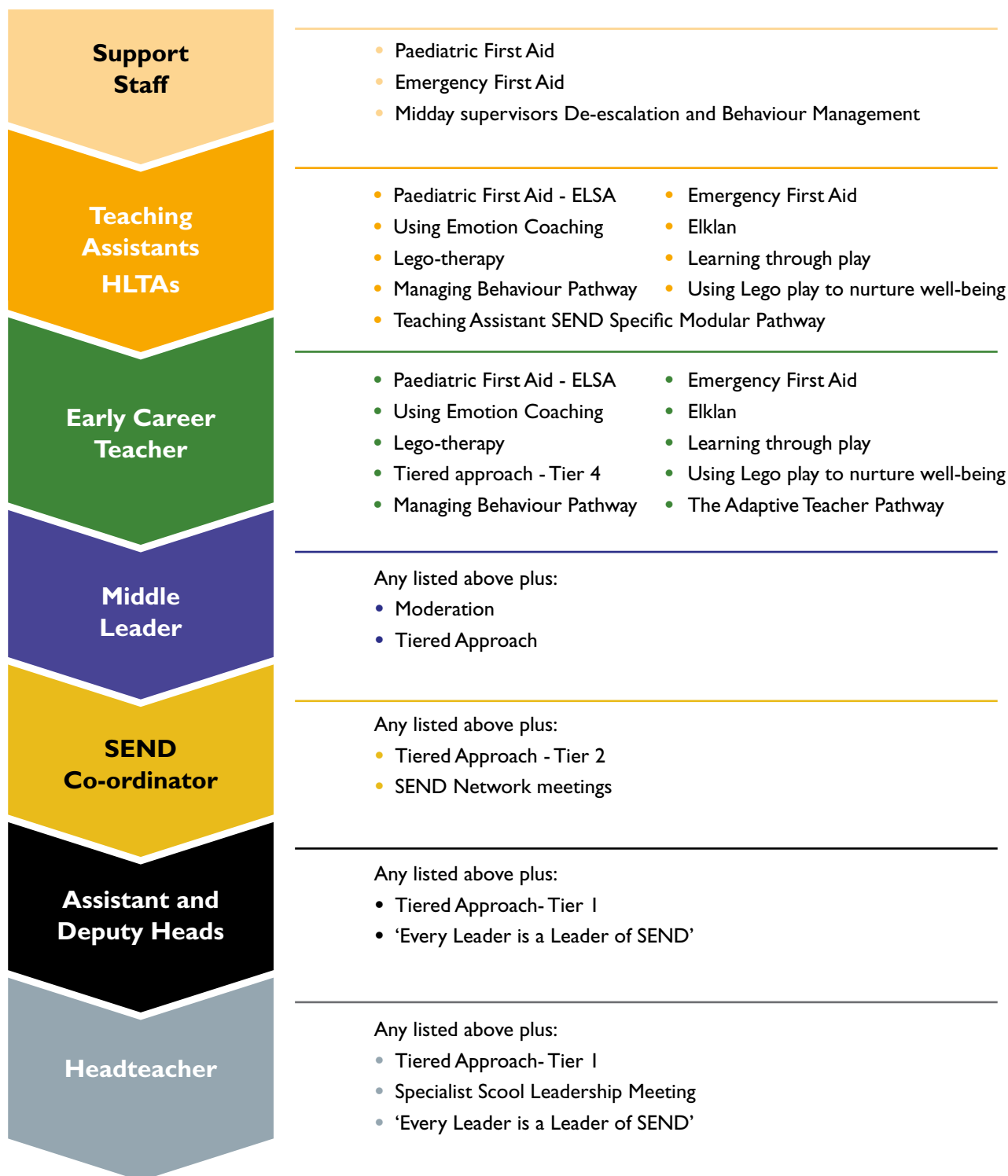


Bespoke support	8
Deployments	10
Team Teach Training	22
First Aid Training	13
Courses:	
• Send Leadership - A Tiered Approach	
- Tier 1: Leadership	14
- Tier 2: SENCOs	15
- Tier 3: Middle Leaders	15
• SEND specific	16
• Specialist School Leadership Meeting	17
• SEND ; 'Everybody's Responsibility'	17
• 'Every leader is a leader of SEND'	18
• 'Every teacher is a teacher of SEND'	18
• The Adaptive Teacher Pathway	19
• Send Leadership - A Tiered Approach	
- Tier 4: Teachers	20
• Teaching Assistant - SEND Specific Modular Pathway	22
• Managing Behaviour Pathway	24
• Team Teach	26
• Midday Supervisors De-escalation and Behaviour Management	27
• Lego therapy	28
• ADHD	29
• Using Emotion Coaching	29
• Elklan	30
• Meeting Complex Needs in EYFS in Mainstream Settings	31
• Mental and Emotional Wellbeing - ELSA	32
• Emergency First Aid at Work	33
• Paediatric First Aid	33
• Moderation	34
Partnerships	35

Progression of roles and course availability

All roles within a school/academy are of equal importance in making a successful environment in which pupils learn. Each role has the opportunity for progression and succession. Progression can either be moving to the next stage on the journey or gaining further skills within the same band. Every role should have access to continuous professional development to ensure that the skills, knowledge and attitudes are maintained and challenged.

Appropriate Courses for Different Levels



BESPOKE SUPPORT

Tailored Support Tailored Just for You

At LEARN SEND Hub, we're dedicated to providing bespoke support that aligns with your setting's professional and development needs. Whether it's staff meetings, twilight sessions, or personalised 1:1 assistance.

Our team of SEND Specialist Partners and SEND Consultants can make a significant impact on your setting. When you engage with us, a dedicated LEARN SEND Hub Specialist will meet with you to thoroughly understand your requirements. From there, we'll craft a tailored package designed to address your unique challenges and goals.

Throughout our brochure, you'll find an array of courses and training packages to choose from. Any of these can be tailored and booked for delivery within your individual setting, for staff teams or clusters of schools.

"Our OFSTED report is published! Thank you so much for all the support you gave us with SEND. Our provision really shone in the inspection and this is in large part thanks to the work you and Rachel did in the autumn. We are extremely grateful to you and the for the wider impact your work has had on our school and experiences of our most vulnerable pupils. Thank you so much."

Mark Ratchford, Headteacher
Market Deeping Community Primary School

Here's what a LEARN SEND Lead Practitioner can do for you:

- Tailor staff meetings or twilight sessions to precisely match your needs.
- Provide individualised guidance to teachers, nurturing specific skills and knowledge.
- Collaborate with leaders to cultivate expertise and drive improvement within their specialist domains.
- Assist in developing frameworks and policies, ensuring alignment with best practices.
- Conduct thorough needs assessments and monitoring to support targeted areas of improvement.

"Thank you so much for all of the hard work and effort you have put into working with our SENCo and getting our school back on its feet with regards to SEND - you have been incredible! I am hoping that what you have put in place can now be embedded and sustained to ensure that we are providing the best possible education for these children that each and every one of them deserves."

John Slater, Trust Teaching & Learning / Lead/Acting Headteacher
Little Gonerby

"I would just like to send an email with regards Amy Storer who completed our SEN review. She is such a knowledgeable professional who listened carefully to understand our school and our needs to ensure the visit was purposeful and could move forward in its SEN provision. Amy was supportive but challenging and really understood the journey we have been on as a school. The process has been so valuable and I am hopeful that the links with continue and we can work with Amy again. Working together to provide a better education for all is of upmost importance to everyone at OLMC and we embrace this support whole heartedly. Thank you again for the opportunity and great thanks to Amy personally. You have found an amazing staff member."

Philippa Martin, Deputy Head
Our Lady of Mount Carmel Catholic Primary School

General enquires can be made to:

Telephone: 01400 659009

Email: enquiries@learnsendhub.co.uk

BUILD A BESPOKE CPD PACKAGE

Build Your School's Professional Development with LEARN SEND Hub

Whether you're looking to focus on specific areas of support during a full inset day or prefer a modular, online-based training package over a set time period, we provide the flexibility to curate a program that fits your needs.

With the ability to select sessions based on your school's priorities, you can ensure that your staff receive targeted training that addresses the challenges they face in supporting students.

Customisable CPD Packages

At LEARN SEND Hub, we recognise that every school is unique. That's why we offer the flexibility for you to pick and choose from our range of CPD packages and modules, allowing you to create a bespoke training program that works with your school's specific needs and goals.

Tailor your CPD experience by selecting the packages that best suit your school's requirements.

Tailored Inset Sessions

Our CPD packages include inset sessions that can be tailored to fit into your school's schedule. Whether you prefer half-day or full-day sessions, we can discuss and build a session to accommodate your preferences. We will work with you to build these sessions to equip your staff with practical strategies and resources to enhance their teaching practices.

Twilight Sessions

We understand the time constraints educators face. That's why we can offer twilight sessions. These sessions are designed to be flexible, allowing teachers, teaching assistants (TAs) and support staff to participate without disrupting their daily routines. Our twilight sessions will be tailored to cover a range of topics that you identify as needing in your setting, ensuring continuous learning and growth among your staff.

Comprehensive Modules

Choose from a diverse range of modules tailored to address various aspects of SEND support. From Behaviour and Engagement, High Quality Teaching, Scaffolding to IEP Planning and implementation, our modules provide comprehensive guidance and practical insights for all levels of staff within your school.

Expert Facilitation

Training sessions are facilitated by our highly experienced SEND professionals who bring a wealth of knowledge and expertise. They engage through interactive workshops, case studies, and collaborative activities, ensuring an invaluable learning experience for all attendees.

Benefits of Choosing LEARN SEND Hub

- Tailored CPD packages to meet your school's specific needs.
- Flexible scheduling options to accommodate your staff's availability.
- Comprehensive modules covering a wide range of SEND-related topics.
- Expert facilitation by experienced SEND professionals.

If you wish to discuss how we can help build your CPD days please get in touch in the first instance. General enquires can be made to: enquiries@learnsendhub.co.uk

DEPLOYMENTS

SENCo Support

Are you a newly appointed SENCo? Do you feel that you could benefit from a more hands-on approach, with access to additional support, resources, and innovative ideas?

Have you been in the role of SENCo for a while? Would you find value in a collaborative approach, where there is an exchange of ideas and resources to create a strategic plan?

Are you an experienced SENCo with expertise within the role? Do you seek support through meaningful conversations and thoughtful questioning to delve deeper and discover additional ways to enhance your practices and work more strategically?

Every school is unique, and the support we provide is tailored to meet the specific needs of the school and its staff.

Below are some of the ways in which LEARN can assist you in your role:

- Providing support for newly appointed SENCos
- Supporting existing SENCos
- Conducting onsite training for teachers and teaching assistants
- Reviewing and refining systems and processes
- Facilitating discussions to problem-solve and create action plans
- Conducting a SEND Review
- Guiding through the EHCP process
- Implementing policies into practice
- Mapping out continuous professional development opportunities
- Tracking EHCP outcomes

If you are applying for any support with funding, it may be beneficial to undergo a SEND Review. This comprehensive assessment evaluates your current SEND provisions, identifies strengths, and pinpoints areas for improvement.

SEND Reviews

These look at how a school is managing their SEND provision. It will enable schools to identify areas of strength and areas of improvement within existing SEND provision, based on the findings of a full and thorough audit from the London Challenge model. As a reviewer, system leaders will work with you to develop your SEND strategy. Reviewers have a track record of supporting schools in making a difference to SEND provision effectively meeting learner's needs.

MAT SEND Reviews

The aim of a MAT SEND review is to create a framework that supports a Trust-wide approach to SEND, involving senior leaders at Academy and Trust level, developing staff awareness and expertise, together with building strategic leadership to improve identification, progress and outcomes for learners with SEND. By engaging and collaborating with colleagues from MATs and conducting shared reviews, we can collate a thorough overview of need and available resources to develop an effective MAT SEND approach based on evidenced best practice. An online audit will be provided to support this process.

Health Checks

A health check is an opportunity for school leaders to acquire a school review. A review will involve high challenge in a highly supportive environment, evaluating the school's performance either generally, or, within targeted areas, providing recommendations for future development.

Engagement with a health check enables schools to consider their current position by collaboratively identifying strengths and development needs and planning for the management of effective change. This will be done by the review team providing robust challenge and support throughout.

We offer a variety of deployments listed below. If you would like further information and prices please contact Sarah Robertson via email: sarah.robertson@learnsendhub.co.uk

Access Arrangement Assessor

LEARN SEND Hub have a trained Access Arrangement Assessor who can complete psychometric tests within your setting to write suitable and appropriate assessment reports for submission to examination boards, where required.

Supporting Governing Bodies with Headteacher Appointments

An external advisor will work collaboratively with the Governing Body, supporting them in the appointment of a new Headteacher. A bespoke offer can be created for the needs of the school setting including support during the recruitment and interview phase.

Supporting Governing Bodies with Headteacher Performance Management

Governing Bodies for maintained schools are required to set objectives for their Headteacher as part of an annual appraisal.

An external advisor will support Governing Bodies in Headteacher performance management. They will assist with the setting of objectives, including success criteria and performance measures.

The same advisor can be booked to support the review of performance either during or at the end of the review cycle.

School Resource Management Advisor

The School Resource Management Advisor course is structured in a peer-to-peer format. The consultant who visits your school will work collaboratively with schools to help them manage their specific set of circumstances. Every situation will be different. However, a common thread of most schools visited recently is that their budgets are affected by some form of financial issue. We want to try and understand what has led them to that position. SRMA deployments are ultimately for supporting schools that are either currently facing a budget deficit or are soon likely to be. Our aim is to explore how they have got there and what we can do to try and improve the situation, while at the same time improving outcomes for pupils.

Independent Pupil Risk Assessments and Risk Management

DfE guidance on 'Use of Force' states that schools may need to undertake individual pupil risk assessments where it is known that force is more likely to be necessary to restrain a particular pupil, such as pupils whose SEN and/or disability is associated with extreme behaviour.

This deployment will ensure that a duty of care is provided for everyone in the setting, from staff to pupils, and including the young people in question.

Advice and Guidance on Managing Challenging Behaviour and Exclusions

Please contact LEARN SEND Hub for more information regarding this deployment as it will be based on the individual needs of the pupil or setting.

TEAM TEACH TRAINING

Our Positive Behaviour Management courses offer accredited, award-winning training designed to enhance workplace practices and to understand and implement holistic behaviour management strategies.

Led by experienced trainers, participants will learn to utilise a toolkit of holistic strategies on de-escalation and crisis intervention, both verbal and non-verbal for supporting with disruptive and distressed behaviours. The curriculum includes legal guidance, documentation, and incident reporting best practices. We emphasise non-physical intervention techniques while also providing positive handling training for schools and education settings. Participants learn safe handling techniques within a respectful, supportive framework for behaviour management.

HOW ARE THE COURSES DELIVERED?

At LEARN SEND Hub, we offer tailored courses, available through open enrolment or closed sessions. Open courses, held onsite at our Training Centre in Long Bennington, offer convenience and flexibility. Our Closed courses offer tailored delivery at your setting and can be scheduled as INSET Days, Half Days, or Twilights. Pricing for Closed Courses is based on attendee numbers, ranging from 6 to 12 participants, mirroring our open course rates. Our courses are both affordable and flexible, enabling you to train as many staff as possible.

CLOSED COURSES

All our courses are delivered by experienced, knowledgeable trainers. They carefully consider the training needs of participants to ensure they can confidently put positive behaviour management strategies into action in their school. Prior to any training, we will discuss the content that you need, and devise a curriculum to meet the specific needs of your service setting.

As well as a tailored unique service our prices can often be more competitive, save journey times and expenses, and work around dates that suit you.

We typically charge:

£900	Positive Behaviour Management Level 1	6-hours	1-Day Course for up to 12 Delegates
£1600	Positive Behaviour Management Level 2	12-hours	2-Day Course for up to 12 Delegates

All participants will receive a Course Workbook and upon successfully completing the course, participants will receive a certificate, delivered via email.

IMPORTANT NOTICE: TEAM TEACH CONNECT PLATFORM FEE

Please note that we have been informed by Team Teach that they are adding an additional fee to their training to pay for schools to have access to their Team Teach Connect platform. The platform will give you access to a helpline, further online training, and stores your certificates. The cost for accessing this platform is £150 per setting, per year, irrespective of the number of individuals trained within your establishment. This is an external license and cost that is managed by Team Teach. Please note that this fee is solely managed by Team Teach, and neither we nor our affiliates are involved in its collection or administration. We do not retain any portion of this payment nor do we oversee the issuance of login credentials or maintenance of licenses/certificates. Following completion of any Team Teach training, you will be contacted directly by Team Teach to arrange payment and establish your access to the Team Teach Connect platform.

DE-ESCALATION TRAINING

We can also offer an interactive training session looking at 'connecting before correcting' as you build new ideas to develop positive relationships with children and young people in the classroom. This session will help you develop positive de-escalation strategies as you radiate energy in your setting. Suitable for all staff in any setting, each session lasts around 90 minutes and can be tailored for whole school or role-specific groups.

FIRST AID TRAINING

First aid training is something many people see as necessary workplace training; it is so much more than that. Do you wish for all your staff to have some level of first aid knowledge and the confidence to help in an emergency?

Our First Aid training courses, accredited by ProTrainings, blend theory with hands-on learning, delivered by experienced trainers.

At LEARN SEND Hub, we also offer tailored courses for First Aid, available through open enrolment or closed sessions. Pricing for Closed Courses is based on attendee numbers, ranging from 6 to 12 participants, mirroring our open course rates. Our courses are both affordable and flexible, enabling you to train as many staff as possible.



Emergency First Aid at Work (EFAW) 1-day course (6 hours)



£95 per attendee (with no added VAT)

Learn the essentials of first aid for your workplace and prepare yourself to deal with workplace emergencies.

This is a Level 3 (VTQ) qualification and is ideal for most businesses whose risk assessment has identified that there is no requirement for a fully trained first aider for their workplace. All courses are delivered, evaluated, and quality assured to meet the guidelines set out by the HSE and meet the requirements of the First Aid at Work (First Aid) Regulations.

Paediatric 12 Hour infant/Child First Aid (PFA) 2-day course (12 hours)



£165 per attendee (with no added VAT)

Spend 12 hours learning vital information to potentially save an infant's or child's life with this course.

This is a Level 3 (VTQ) qualification designed to meet and exceed the requirements for registering as a childminder or working in a childcare setting with EYFS, CSSIW, and SureStart for individuals requiring a 2-day, 12-hour first aid course for infants and children. This group includes childminders and carers. ProTrainings Paediatric courses are approved by councils across the UK.

All our first aid courses fully meet the UK and European Resuscitation Council Guidelines 2021, as per the HSE requirements. ProTrainings Vocational Training Qualifications (VTQ) are fully recognised by the HSE as Trade Body Qualifications.

After successfully completing the course, participants will receive a certificate valid for three years, delivered via email.

FURTHER INFORMATION

At LEARN SEND Hub, courses include refreshments as part of the overall course package. However, please note that lunch is not provided during the sessions. Participants are required to organise and cover their own expenses related to travel and accommodation.

If you would like to enquire about any of our Closed Courses or receive further information please contact LEARN SEND Hub at enquiries@learnsendhub.co.uk



SEND Leadership – A Tiered Approach

This tiered training programme is aimed at supporting school leaders to understand their individual responsibilities within the leadership of SEND. It will address statutory requirements, schemes of delegation, curriculum adaptation and the monitoring of provision. The aim is that leaders have clarity of their roles within schools and their responsibility in supporting the wider team in meeting pupil need and monitoring the impact of their provision. This programme will prepare leaders for the changes cited within the March 2023 Department of Education SEND and Alternative Provision (AP) Implementation Plan.



Tier 1: Leadership

Aimed at senior leaders in schools to clarify what strategic leadership of SEND is and develop a SEND focused scheme of delegation. It will support schools in using an audit of provision to be reviewed over time. This audit will focus on leadership of SEND, quality of teaching and learning and the use of resources.



DATE	TIME	VENUE
Thursday 26th September 2024	9.15am-3.30pm	LEARN

Face-to-face training / Cost: £95

Tier 2: SENCOs

Aimed at SENCOs, to support them in being strategic leaders, linking closely with the senior leadership team to cascade information and training throughout the school. It will address new research and government-led recommendations and initiatives, identify and signpost support organisations eg. Whole school SEND and will include EEF SEND in the Mainstream guidance. The trainers will support and challenge the delegates to consider the next steps required to meet the recommendations from the various evidence sources, enabling them to link theory and practice in their own provision, leading to future-proofing inclusive education.



SESSION	DATE & CONTENT	TIME	VENUE
Day 1	Thursday 14th November 2024 <ul style="list-style-type: none"> Strategic leadership of SEND Working effectively with parents Your school through a SEND lens 	9.15am-3.30pm	LEARN
Day 2	Tuesday 4th February 2025 <ul style="list-style-type: none"> High quality teaching Managing your provision-CPD/Finance/Deployment of outside agencies 	9.15am-3.30pm	LEARN

Face-to-face training
Cost: £190



Tier 3: Middle leaders

Aimed at Middle Leaders (MLs). It will ensure that MLs have a clear understanding of statutory requirements in relation to SEND. It will enable them to review their curriculum offer, check that it meets the needs of all learners and consider how it can be adapted to do so. MLs will consider how to support teachers in implementing this, and monitor effectiveness through a SEND lens using the EEFs implementation cycle.



SESSION	DATE & CONTENT	TIME	VENUE
Day 1	Tuesday 21st January 2025 <ul style="list-style-type: none"> Policy to Practice Curriculum offer for SEND Implementation as a process 	9.15am-3.30pm	LEARN
Day 2	Tuesday 18th March 2025 <ul style="list-style-type: none"> High quality teaching Monitoring of provision through a SEND lens 	9.15am-3.30pm	LEARN

Face-to-face training
Cost: £190





SEND-SPECIFIC



SEND Network meetings

These termly cluster meetings will equip you with the latest regional and national SEND updates, including updates from Whole School SEND. Research informed documents will be shared, creating a forum for colleagues to reflect how best practice can be implemented into their setting.

TERM	DATE	TIME	VENUE
Autumn term	Tuesday 1st October 2024	1pm-3.30pm	LEARN
Autumn term	Tuesday 8th October 2024	1pm-3.30pm	L.E.A.D. Teaching School Hub 
Spring term	Thursday 11th March 2025	1pm-3.30pm	LEARN
Spring term	Thursday 18th March 2025	1pm-3.30pm	L.E.A.D. Teaching School Hub 
Summer term	Wednesday 11th June 2025	1pm-3.30pm	L.E.A.D. Teaching School Hub 
Summer term	Wednesday 18th June 2025	1pm-3.30pm	LEARN

Audience SENCo, SENCo assistants, aspiring SENCos

Cost FREE

Specialist School Leadership Meeting



“Working together to best meet the needs of learners in specialist settings”

LEARN SEND Hub and Inspire SEND Alliance aim to support schools in ensuring our SEND pupils needs are met in the best way.

The Specialist School Leadership Meeting will provide the opportunity to:

- Hear key updates around SEND
- Receive training and support from various SEND professionals
- Network with Headteachers.



SESSION	DATE	TIME	VENUE
Session 1	Friday 6th December 2024	10am-1pm	LEARN
Session 2	Friday 21st March 2025	10am-1pm	TBC
Session 3	Friday 11th July 2025	10am-1pm	L.E.A.D.



Audience	Leaders of Specialist settings
Cost	FREE

SEND – ‘Everybody’s Responsibility’

This series of webinars are directed at specific groups of staff in school to promote and understand their roles and responsibilities around SEND, ensuring compliance with the SEND Code of Practice. It will also include familiarisation of the recent Special Educational Needs and Disabilities and Alternative Provision Green Paper.

‘Every Governor is a Governor of SEND’

This webinar is designed to support Governors to:

- Understand their statutory responsibilities around SEND
- Understand what makes effective strategic leadership of SEND in school
- Understand how the OfSTED framework impacts on SEND leadership and governance
- Identify practical ways of working as a governing body to create support and challenge with regard to SEND.



DATE	TIME	VENUE
Tuesday 1st October 2024	3.45pm-5.15pm	ONLINE

Audience	Governors
Cost	£25



‘Every leader is a leader of SEND’



This webinar is designed to support leaders to:

- Have a deep-rooted understanding of high-quality teaching and learning, knowing how to implement this effectively across an educational setting to ensure inclusion for all.
- Understand how the OfSTED framework impacts on SEND leadership.
- Understand their statutory responsibilities around SEND.

DATE	TIME	VENUE
Wednesday 9th October 2024	3.45pm-5.15pm	ONLINE

Audience	School leaders
Cost	£25



‘Every Teacher is a Teacher of SEND’

This webinar is designed to support teachers to:

- Have a strong understanding of high-quality teaching and learning, and knowing how to effectively design, implement, assess and deliver an excellent curriculum for all learners.
- Be sufficiently skilled and confident to identify when a learner is experiencing a barrier to their learning, well-being and behaviour.
- Understand the OfSTED Framework’s expectations around SEND.



DATE	TIME	VENUE
Thursday 17th October 2024	3.45pm-5.15pm	ONLINE

Audience	Teachers
Cost	£25



The Adaptive Teacher Pathway

Adaptive teaching is a pedagogical approach to education that tailors instruction to meet the individual needs of pupils. It involves continually assessing pupils' progress and adjusting teaching strategies and content accordingly.

This approach recognises that pupils have diverse prior knowledge, backgrounds, abilities and interests, and aims to provide personalised support to optimise their learning experiences and outcomes.

Ultimately, adaptive teaching empowers educators to meet pupils where they are, fostering a more inclusive and effective learning environment for all.

This two-day programme of professional learning will explore:

SESSION	DATE & CONTENT	TIME	VENUE
Day 1	Wednesday 12th February 2025 <ul style="list-style-type: none"> • The context of adaptive teaching and the statutory guidance in which we operate; • Adaptive teaching – what it is and what it isn't; • High quality teaching principles; • Practical strategies for adaptive teaching focussed on the four broad areas of need; 	9.15am-3.30pm	LEARN
Day 2	Wednesday 2nd April 2025 <ul style="list-style-type: none"> • The role of assessment in ensuring timely and accurate adaptations; • The role of teachers and TAs in curriculum adaptation; • Effective communication strategies (for within school and also for working with parents and carers). • Practical strategies for adaptive teaching focussed on the four broad areas of need; 	9.15am-3.30pm	LEARN

Face-to-face training / Cost: £190

Tier 4: Teachers



Delivered by our in-house experienced SEND consultant, offering 1.5 hours of high-quality learning from a modular toolkit, which can be accessed by all teachers depending on their individual CPD requirements. The twelve modules in total will complement the ECT and NPQ packages by providing practical guidance. They will address research and common themes affecting learners and schools.

All twelve modules are presented through live online Zoom webinars by our team of experienced in-house SEND professionals.

Module 1 Thursday 3rd October 2024	High Quality Teaching - the Inclusive Teacher High quality teaching is firmly based on strategies that every mainstream teacher will have in their toolboxes or that can be easily added to (EEF 2021). High quality teaching lessons reduces the need for extra support for all pupils. This session will promote the use of strategies researched by the Education Endowment Fund.
Module 2 Thursday 7th November 2024	Working with support staff The increase in support staff has trebled since 2000, but do we always use them effectively? This module will let you reflect on your own settings and consider next steps on how to potentially develop the role and deployment of the Teaching Assistant.
Module 3 Thursday 21st November 2024	Scaffolding This module looks at the area of scaffolding, a key strategy for improving learning, particularly in support of pupils with SEND.
Module 4 Thursday 5th December 2024	Teachers toolkit for meeting Cognition and Learning Needs This module will focus on recognition of pupils that have cognition and learning needs. It will look at the common conditions that are included in this area and will consider the difficulties faced when learning. It will provide day-to-day strategies to help pupils access the curriculum. We will also discuss intervention strategies and the support organisations that can be accessed in the setting.
Module 5 Thursday 12th December 2024	Teachers toolkit for meeting Communication and Interaction needs This module will focus on recognition of pupils that have communication and interaction needs. It will look at the common conditions that are included in this area and consider the difficulties faced when learning. It will provide day-to-day strategies to help pupils access the curriculum. Intervention strategies and the support organisations that can be accessed in the setting will be discussed.
Module 6 Thursday 16th January 2025	Teachers toolkit for meeting Social, Emotional and Mental Health Needs This module will focus on recognition of pupils that have social, emotional and mental health needs. It will look at the common conditions that are included in this area and consider the difficulties faced when learning. It will provide day-to-day strategies to help pupils access the curriculum. Intervention strategies and the support organisations that can be accessed in the setting will be discussed.
Module 7 Thursday 6th February 2025	Teachers toolkit for meeting Physical and Sensory Needs This module will focus on recognition of pupils that have physical and sensory needs. It will look at the common conditions that are included in this area and consider the difficulties faced when learning. It will provide day-to-day strategies to help pupils access the curriculum. Intervention strategies and the support organisations that can be accessed in the setting will be discussed.



Module 8 Behaviour and Engagement

Thursday 27th
February 2025

Behaviour IS communication. This module develops an understanding that both positive and negative behaviours reflect how a pupil is feeling. Until those negative behaviours are managed the pupil will find it difficult to be engaged with learning. This module will provide strategies to manage those more challenging behaviours and therefore enable learning and progress.

Module 9 IEP - Plan through to implementation

Thursday 13th
March 2025

This module will look at writing an effective IEP making it a working document to enable progress and drive forward learning with our pupils with SEND.

Module 10 Learning environments

Thursday 24th
April 2025

This module will cover the physical, emotional, and social considerations for your learning environment, focussing on communication-friendly solutions.

Module 11 Working in Partnership

Thursday 22nd
May 2025

There are a range of other stakeholders in schools that need to be part of the collaborative approach in supporting pupils with SEND. This module will look at these working partners and work on how we can solidify relationships so that all pupils with SEND will benefit.

Module 12 Successful SEND support-graduated approach cycle

Thursday 12th
June 2025

This module will work through the four elements of the graduated approach improving the teacher's responsiveness to the pupil's needs.

ALL THE ABOVE ARE WEBINARS HELD AT 3.45PM-5.15PM

These modules can be purchased at four different levels, individually for £20 or discover the true value of our modules with our bundle packages: Bronze, Silver, or Gold.

**Study Level:
INDIVIDUAL**
1 module
£20 per person

**Study Level:
BRONZE**
6 modules
£90 per person

**Study Level:
SILVER**
9 modules
£135 per person

**Study Level:
GOLD**
12 modules
£165 per person

TEACHING ASSISTANT – SEND SPECIFIC MODULAR PATHWAY

This is a modular toolkit which can be accessed by all teaching assistants working with pupils with SEND in mainstream primary and secondary school settings. These are one-hour long webinars which will be time-accessible on the LEARN website. They have been developed to assist teaching assistants in developing their skills, effectiveness and confidence when working with pupils with SEND.



All twelve modules are presented through prerecorded webinars by our team of experienced in-house SEND professionals. Webinars are 1 hour long.

Module 1	The role of the teaching assistant with pupils with SEND and development of working relationships. This module will investigate the role of teaching assistants in school and how this has changed and grown over time. It will look at the key role of the teaching assistant in mainstream schools particularly with pupils with SEND. It will also consider the importance of forming solid professional working relationships with pupils, parents and staff.
Module 2	High Quality Teaching In this module we will look at the components of High Quality Teaching using research materials developed by the Education Endowment Fund.
Module 3	Promoting effective group working Teaching assistants spend a proportion of their time working with small groups of pupils. This module will consider how best to support the pupils in group settings.
Module 4	Promoting independence This module considers how best to help our pupils with SEND develop their own personal independence and independent learning.
Module 5	Scaffolding and questioning This module looks at the area of scaffolding, a key process by which learners are helped to achieve their learning goals. The art of skilled questioning techniques are also explored.
Module 6	Delivering effective intervention programmes This module will look at the types of intervention that are available and appropriate strategies for delivery. It will consider the components required for a successful intervention making links from the learning in the intervention sessions to the learning in the classroom.
Module 7	Providing valuable feedback for teachers and pupil Teaching assistants often have the privileged position of being with pupils when learning occurs. This module will consider ways of providing essential quality feedback of that learning to the teacher and pupils.
Module 8	Understanding Communication and Interaction needs This module will focus on recognition of pupils that have communication and interaction needs. It will look at the common conditions that are included in this area and consider the difficulties faced when learning. It will provide a strategy toolbox for the teaching assistant to help support all pupils with their needs.



Module 9 Understanding Cognition and Learning needs

This module will focus on recognition of pupils that have cognition and interaction needs. It will look at the common conditions that are included in this area and consider the difficulties faced when learning. It will provide a strategy toolbox for the teaching assistant to help support all pupils with their needs.

Module 10 Understanding Social, Emotional and Mental Health Needs

This module will focus on recognition of pupils that have social, emotional and mental health needs. It will look at the common conditions that are included in this area and consider the difficulties faced when learning. It will provide day-to-day strategies to help these pupils access the curriculum. It will provide a strategy toolbox for the teaching assistant to help support all pupils with their needs.

Module 11 Understanding Physical and Sensory Needs

This module will focus on recognition of pupils that have physical and sensory needs. It will look at the common conditions that are included in this area and consider the difficulties faced when learning. It will provide day-to-day strategies to help pupils access the curriculum.

Module 12 Calm and ‘ready’ to learn

This module develops an understanding that both positive and negative behaviours reflect how a pupil is feeling. It will provide strategies for de-escalation when managing more challenging behaviours and therefore enable learning and progress.

Upon completion of your booking, a personalised and secure link will be sent to the email address you have provided.
Your module will remain accessible for a period of one month.

These modules can be purchased at four different levels. Individually for £15
or discover the true value of our modules with our bundle packages: Bronze, Silver, or Gold.

**Study Level:
INDIVIDUAL**
1 module
£15 per person

**Study Level:
BRONZE**
6 modules
£60 per person

**Study Level:
SILVER**
9 modules
£85 per person

**Study Level:
GOLD**
12 modules
£96 per person

MANAGING BEHAVIOUR PATHWAY

Managing behaviour

This is a modular toolkit which can be accessed by all staff who wish to understand and manage behaviours in the classroom. All modules are presented through prerecorded webinars by our team of experienced in-house SEND professionals. Webinars are 2 hours long, designed to be completed in 30 minute sessions.



Module 1	Behaviour as a form of communication <p>Behaviour is communication. Many children and young people who have behavioural difficulties, including many of those with social, emotional and mental health needs (SEMh), also have speech, language and communication needs (SLCN). This module develops an understanding that both positive and negative behaviours reflect how a pupil is feeling, particularly if they are not able to verbally express these feelings.</p>
Module 2	Managing extreme emotions and teaching learning behaviours <p>Some pupils, particularly those who experience four or more adverse childhood experiences may struggle to manage their emotions. This module will focus on how they can be managed within the classroom and be given the support to develop their own emotional management.</p>
Module 3	Relationship-based approaches to inclusion development <p>Building and maintaining relationships between everyone in the school community is fundamental to supporting positive social behaviour. Negative behaviours are predominantly due to unmet needs indicating that a pupil needs support in developing alternative management strategies.</p> <p>Developing an understanding of relationship-based and restorative approaches to manage classroom behaviours will positively impact on easing conflicting situations in the classroom.</p>
Module 4	Emotion Coaching <p>Emotion Coaching uses moments of heightened emotion and resulting behaviour to guide and teach the child and young person about more effective responses. Through empathetic engagement, the child's emotional state is verbally acknowledged and validated, promoting a sense of security and feeling 'felt'. This activates changes in the child's neurological system and allows the child to calm down, physiologically and psychologically.</p>
Module 5	Trauma-informed practice <p>This module develops the participant's understanding about how traumatic events shape children or young people's neurological development and offers strategies to support them.</p>
Module 6	The impact of ADHD on behaviour <p>Children with ADHD can experience behaviour issues related to emotional regulation. This can present in a number of ways, one of which being a refusal to complete tasks they don't want to do. This module looks at reasons for this and proposes strategies to manage these behaviours.</p>
Module 7	'Every Child Deserves a Champion'- how do we change the narrative? <p>This behaviour module is designed to empower participants to become advocates for all students. It focuses on shifting the narrative from viewing certain behaviours as problematic to understanding them as opportunities for support and growth. In this module, participants learn strategies to foster positive relationships with others in a classroom environment where every student feels safe, valued and supported, regardless of their challenges or differences.</p>



Module 8 Know and understand your pupils

This module is aimed at helping participants develop a deeper insight into the individual needs, strengths, and preferences of their students. By fostering a strong understanding of each pupil, participants can tailor their instruction to better meet the diverse learning styles and abilities present in the classroom.

Module 9 De-escalation

De-escalation refers to the process of diffusing conflicts as they begin to prevent children and young people from getting worse or potentially violent. In regards to classroom management, you will learn strategies that can help to de-escalate conflicts in their earliest stages and stop small behavioural issues before they get out of hand.

Module 10 Relationship with curriculum, relationships with others and relationship with self

Using the EEF Improving Behaviour in Schools guidance report as a supportive mechanism this module will focus on developing strategies to improve pupil resilience and self-evaluation of our approach towards our pupils.

Module 11 Building a positive behaviour environment – physically safe, socially safe and emotionally safe

This module is self-explanatory and draws upon research-based materials that will help school staff to create a positive and supportive environment for all pupils so that they are ready to learn.

These modules can be purchased at four different levels. Individually for £25 or discover the true value of our modules with our bundle packages: Bronze, Silver, or Gold.

**Study Level:
INDIVIDUAL**
1 module
£25 per person

**Study Level:
BRONZE**
3 modules
£60 per person

**Study Level:
SILVER**
7 modules
£135 per person

**Study Level:
GOLD**
11 modules
£165 per person

TEAM TEACH



Team Teach-Level 1

This training is only available to staff that work in Lincolnshire.

Our Positive Behaviour Management Level One courses are for individuals operating in low-risk service settings. This includes mainstream primary and secondary schools, children’s hospitals, adult learning, and residential homes.

This course equips individuals with simple de-escalation strategies and basic positive handling techniques to deal with challenging behaviour and encourage positive relationships in their working environment.



SESSION	DATE	TIME	VENUE
Session 1	Friday 4th October 2024	9am-3.30pm	LEARN
Alternative session	Friday 14th March 2025	9am-3.30pm	LEARN
Alternative session	Friday 27th June 2025	9am-3.30pm	LEARN

Audience	Mainstream settings with low incidence rates
Cost	£115

Team Teach – Level 2 (2 day course)

This training is only available to staff that work in Lincolnshire.

Participants will learn how to:

- Understand the drivers and motivations displayed by individuals who are distressed and may become aggressive and disruptive.
- Build stronger team confidence around supporting behaviour.
- Utilise the holistic strategies on de-escalation and crisis intervention, including the importance of targeted communication, both verbal and non-verbal.
- Understand and know relevant legal standards and exceptions related to the use of force, and of the reporting, recording, monitoring and evaluating requirements of incidents involving physical controls and reasonable force.



SESSION	DATE	TIME	VENUE
Session 1	Thursday 7th & Friday 8th November 2024	9am-3.30pm	LEARN
Alternative session	Tuesday 4th & Friday 7th March 2025	9am-3.30pm	LEARN
Alternative session	Friday 13th June & Friday 20th June	9am-3.30pm	LEARN

Audience	Medium risk Education and Health Care settings
Cost	£210





Middy Supervisors De-escalation and Behaviour Management

Improved communication skills from staff will help children manage their emotions at lunchtimes, finding solutions to resolve these challenging behaviours to create happier lunchtimes.

SESSION	DATE	TIME	VENUE
Session 1	Wednesday 13th November 2024	9am-11am	LEARN
Alternative session	Wednesday 19th March 2025	9am-11am	LEARN



Audience	All
Cost	£25

LEGO THERAPY



Using Lego play to support social skills

This interactive and informative training will equip participants with the necessary knowledge, skills and confidence to be able to set up and deliver a Lego club, giving particular attention to the use of structured and freestyle Lego play. Lego-based therapy is a skill-building approach using Lego play. Using the structured and predictable nature of Lego, it attempts to improve basic social interaction and communication skills.

Because Lego is fun, it also helps to increase a child's underlying motivation and interest for engaging in social interaction and establishing peer relationships. Originally developed for children with Autism, it can also be useful for any children where social skills have not developed naturally or where there are gaps.



DATE	TIME	VENUE
Wednesday 15th January 2025	9am-12pm	LEARN

Audience	Primary and secondary teachers and TAs
Cost	£95

Using Lego play to nurture well-being



This is an intervention that offers schools a targeted way of supporting children and young people who are vulnerable and who may also present with complex Social, Emotional and Mental Health (SEMh) needs. Using Lego helps key adults to be playful and interactive in order to improve a range of social-emotional skills with the aim of promoting positive mental health and wellbeing. Training in this intervention will help attendees to set up and deliver this intervention, giving particular attention to the use of active listening, noticing, and responding, to build safe and secure relationships.



By the end of this training session all attendees will be ready to set up and deliver their first intervention through:

- Understanding what the intervention is
- Considering the possible impact for children and young people
- Exploring ways of evaluating the impact of an intervention with Lego



DATE	TIME	VENUE
Thursday 21st November 2024	9am-12pm	LEARN

Audience	Primary and secondary teachers and TAs
Cost	£95

ADHD

Breaking down barriers: Learning with ADHD



A three-hour training session that begins with an exploration of what attention is and its role in executive functioning and learning, followed by a detailed look at how attention-based difficulties may present. This session will consider the term 'Attention Deficit Hyperactivity Disorder (ADHD)', including its assessment and potential treatment. The session will close with a look at the practical strategies which can be employed in school to promote learning and wellbeing in children and young people who present with attention-based difficulties.



By the end of this training all attendees will have:

- Gained an understanding of what attention and attention-based difficulties are, including what ADHD is and what it isn't.
- Considered the behaviours we might see.
- Looked at the potential challenges faced by children with attention-based difficulties including those with a diagnosis of ADHD.
- Identified practical ways to support children with attention-based difficulties, including those with a diagnosis of ADHD.

DATE	TIME	VENUE
Thursday 21st November 2024	1pm-4pm	LEARN

Audience	All staff in all settings
Cost	£95

Using Emotion Coaching to Support Relationships, Emotional Regulation and Behaviour



Access this training to discover how to use Emotion Coaching to support positive relationships and behaviour in your classroom and school. Emotion Coaching is an evidence-informed strategy (based upon the work of the Psychologist John Gottman) aimed at helping children and young people to understand the different emotions they experience, why they occur and how to handle them (Gottman 1997).

Emotion Coaching can support a range of benefits, including helping children to regulate, improve and take ownership of their behaviour; help them to calm down and better understand their emotions; create more consistent responses to behaviour; help practitioners to feel more in control during incidents; and promote positive relationships between children and adults.



DATE	TIME	VENUE
Wednesday 12th March 2025	1pm-4pm	LEARN



Audience	Teachers, support staff, trained ELSAs, pastoral staff
Cost	£95

SPEECH AND LANGUAGE SUPPORT FOR 5-11s

ELKLAN 5-11

Local Authority data from 2022-2023 reported that speech, language and communication needs account for 29.1% of the young people that are on the SEND Register. This heightens the necessity for schools to develop strategies to support those pupils. ELKLAN is an externally accredited Level 3 course which will improve your ability to communicate with your pupils and their ability to communicate with you.

This course is written for staff supporting children with speech, language and communication needs (SLCN) in primary schools and special units. It equips them with innovative tools and methods to enhance children's learning in the classroom and promotes quality first teaching.



This course offers access to e-learning modules and frequent meetings with an Elklan tutor. Completion of a learning log is necessary to attain accreditation.

SESSION	DATE	TIME	VENUE
Meet & Greet	Tuesday 15th October 2024	10am-10.30am	ONLINE
Session 1	Tuesday 5th November 2024	10am-11am	ONLINE
Session 2	Tuesday 19th November 2024	10am-11am	ONLINE
Session 3	Tuesday 26th November 2024	10am-11am	ONLINE
Session 4	Tuesday 3rd December 2024	10am-11am	ONLINE
Session 5	Tuesday 14th January 2025	10am-11am	ONLINE
Session 6	Tuesday 21st January 2025	10am-11am	ONLINE
Session 7	Tuesday 28th January 2025	10am-11am	ONLINE
Session 8	Tuesday 4th February 2025	10am-11am	ONLINE
Session 9	Tuesday 11th February 2025	10am-11am	ONLINE
Session 10	Tuesday 25th February 2025	10am-11am	ONLINE



Audience Teachers and Teaching Assistants
Cost £320





Meeting Complex Needs in EYFS in Mainstream Settings

The Education Endowment Fund led research about the dire effects of the pandemic's lockdowns on young children's early learning of language and their communication development. There is good evidence that early intervention can help with delayed language and communication skills. But even with effective language interventions, Teachers and support staff say they need still more support and training to develop the expertise needed to meet the increasingly complex social communication, language and learning needs of higher numbers of children entering the Early Years & Foundation Stage (EYFS) of their mainstream settings.

This half day training, ideal for school staff working in Early Years/Key Stage 1, aims to:

- Raise awareness of the particular difficulties experienced by children with a range of complex needs who may be struggling to access the EYFS curriculum.
- Develop confidence and expertise in meeting the complex needs of these children within their EYFS mainstream settings.



DATE	TIME	VENUE
Thursday 13th March 2025	9am-12pm	LEARN

Audience	Early Years and Foundation Stage practitioners
Cost	£95

MENTAL and EMOTIONAL WELL-BEING

ELSA

Futures in Mind are delivering the Emotional Literacy Support Assistant (ELSA) programme at LEARN. This is an evidence-informed, nationally recognised approach to supporting children and young people (from primary through to secondary) with a range of social and emotional needs.

This highly regarded programme for teaching assistants, pastoral staff and learning mentors will:

- develop their knowledge and understanding of social and emotional needs;
- enhance their skills in being able to plan and implement a range of bespoke interventions and;
- grow their confidence in being able to support vulnerable children and young people.



COURSE STRUCTURE AND CONTENT

A six-day training programme, plus four 2-hour supervision sessions, delivered by two highly experienced Educational Psychologists. The training will cover the following areas:

- Emotional Literacy – learn about the importance of emotional literacy at a whole school level.
- Emotional Regulation – develop your knowledge of emotional regulation.
- Social Skills and use of story work – learn how to develop children and young people’s social skills and use ‘stories’ to meet social and emotional needs.
- Active Listening – master the skills for listening to children and young people.
- Self-esteem and Resilience – discover the five building blocks of self-esteem.
- Grief and Loss – develop your knowledge around grief and loss and how to support children and young people.
- Bespoke interventions – learn how to plan and implement bespoke interventions for meeting social and emotional needs.

SESSION	DATE	SESSION	DATE
Day 1	Wednesday 11th September 2024	Day 4	Wednesday 6th November 2024
Day 2	Wednesday 25th September 2024	Day 5	Wednesday 20th November 2024
Day 3	Wednesday 2nd October 2024	Day 6	Wednesday 4th December 2024

TIME: 9.30am-3.30pm

VENUE: LEARN

Audience: Teaching Assistants, pastoral staff and Learning Mentors

Cost: Prices on application direct to FiM ELSA Courses - Futures in Mind

NOTE: Once the initial training is completed, accessing on-going supervision is integral and essential to your continuing professional development and role as an ELSA. Guidance from the ELSA Network states that ELSAs should access on-going supervision from qualified Educational Psychologists to continue to be able to offer ELSA support in their settings. ELSAs who do not access supervision will be at risk of being de-registered.

ELSA SUPERVISION SESSIONS

SESSION	DATE	SESSION	DATE
Day 1	Wednesday 18th September 2024	Day 4	Wednesday 19th March 2025
Day 2	Wednesday 13th November 2024	Day 5	Wednesday 7th May 2025
Day 3	Wednesday 29th January 2025	Day 6	Wednesday 2nd July 2025

TIME: 9.30am-11.30am or 1pm-3pm

VENUE: LEARN

FIRST AID

Emergency First Aid at Work

This First Aid at Work qualification is suitable for all settings where the risk assessment has identified that there is no requirement for a fully-trained First Aider for the workplace. All courses are delivered, evaluated and quality-assured to meet the new guidelines set out by the HSE and meet the requirements of the First Aid at Work (First Aid regulations).



All our First Aid courses fully meet the UK and European Resuscitation Council Guidelines 2021 as per the HSE requirements. Pro-trainings Vocational Training Qualifications (VTQ) are fully recognised by the HSE as Trade Body Qualifications.

SESSION	DATE	TIME	VENUE
Session 1	Thursday 17th October 2024	9am-3.30pm	LEARN
Alternative session	Thursday 5th December 2024	9am-3.30pm	LEARN
Alternative session	Wednesday 5th February 2025	9am-3.30pm	LEARN
Alternative session	Thursday 15th May 2025	9am-3.30pm	LEARN

Audience	All
Cost	£95



Paediatric First Aid

This two-day paediatric First Aid course focuses on emergency scenarios that face those looking after young children and infants, including day nurseries, private nursery schools, pre-schools, before and after school clubs for children in the Early Years age group, childminders and carers of children at home.

The course meets the OfSTED Early Years and Childcare Register requirements.



SESSION	DATE	TIME	VENUE
Session 1	Tuesday 8th & Wednesday 9th October 2024	9am-3.30pm	LEARN
Alternative session	Tuesday 25th & Wednesday 26th March 2025	9am-3.30pm	LEARN

Audience	All
Cost	£165



SEND Moderation

RATIONALE

When assessing SEND pupils we have to rely very heavily on teacher-assessed judgements. Moderation is essential to the integrity of this, ensuring that all those accessing assessment judgements, be it teachers, pupils, parents, local authorities or inspectors, can have confidence in the information and use it effectively.

Achieving comparability within the SEND sector can also be a challenge. However, we are offering this comprehensive SEND moderation programme to support you in having confidence in your school's judgements.

WHO IS IT FOR?

These moderation sessions are aimed at Subject Leaders who have already internally moderated their subject's work.

PROCESS

The moderation sessions will offer schools the opportunity to test their internal moderation judgements in the following subjects:

- English
- Maths
- Science
- PSHE
- Computing
- Communication

The session will be facilitated by an experienced Senior Leader in SEND alongside a specialist from that subject. Subject leaders attending are asked to bring pieces of internally moderated work from their school which will then be moderated by at least two other leaders from different schools. The work will be moderated against the Pre-Key Stage standards for English and Maths. For other subjects schools will be asked to bring their assessment standards with them to the moderation and judgements will be made against these.

SESSION	DATE	TIME	VENUE
Engagement model/CLDD/ Setting expectations	Monday 14th October 2024	3.30pm-4.30pm	ONLINE
English	Thursday 7th November 2024	9.30am-12pm	LEARN
Mathematics	Wednesday 27th November 2024	9.30am-12pm	LEARN
Science	Thursday 23rd January 2025	9.30am-12pm	LEARN
Computing	Thursday 6th February 2025	9.30am-12pm	LEARN
PSHE/RSE	Thursday 6th March 2025	9.30am-12pm	LEARN
History/Geography	Thursday 13th March 2025	9.30am-12pm	LEARN
Engagement model	Thursday 8th May 2025	9.30am-3.30pm	LEARN

Audience Specialist School Subject Leads, Moderation Leads

Cost FREE


PARTNERSHIPS

We work in partnership or alongside several other hubs and specialist provisions across East Midlands, South Yorkshire and Humber:





Warwick House
Long Bennington Business Park,
Long Bennington,
Newark,
NG23 5JR

01400 659009
 @LEARNteachcen
www.learnsendhub.co.uk

