



WELCOME TO OUR

Autumn Term 2 Newsletter



HI, HOW ARE YOU?

LEARN Update

Season's Greetings from LEARN SEND Hub!

As the festive season approaches, we want to celebrate the hard work of teaching assistants, teachers, and school leaders this year. At LEARN SEND Hub, we've been busy not only preparing exciting new resources, training sessions, and support opportunities but also attending several conferences to share best practices and connect with our fantastic education community.

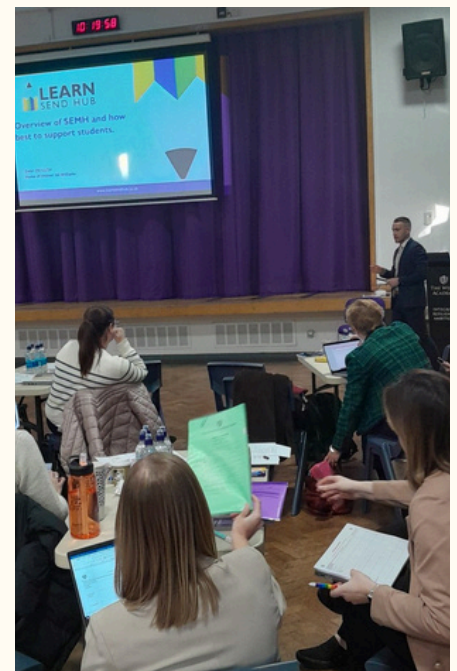
From tailored CPD programs to leadership development initiatives, we're here to help you foster inclusive environments and make a meaningful impact in your schools. Wishing you a joyous holiday season and a successful start to the new year ahead! 🎄 ✨

Ali delivering on SEMH

Ali Williams is the Deputy Headteacher of one of our CIT schools - Foxfields Academy, which is an all-through SEMH school in Leicestershire. He has been making a significant impact through his recent training sessions for LEARN SEND Hub. With over a decade of experience in both mainstream and special education, Ali is an accomplished Senior Leader, holding the NPQH and contributing to national education discussions through his published articles in leading magazines.

Last month, Ali delivered inspiring sessions at Lincolnshire's Leadership Conference and Greenwood Academies Trust SEND Conference, receiving outstanding feedback for his expertise and engaging delivery.

He will also lead 'SEMH - The Bigger Picture' on 17th January, offering practical insights to support inclusive and nurturing school environments. Ali's wealth of knowledge and passion for SEMH make him an invaluable contributor to professional development in education.

[BOOK SEMH - THE BIGGER PICTURE HERE](#)



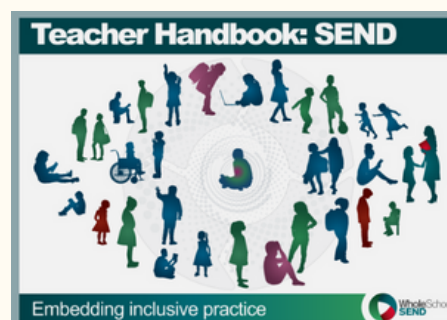
Whole School SEND

Whole School SEND is a consortium of charities, schools, and organizations committed to helping children and young people with special educational needs and/or disabilities (SEND) to reach their full potential. Hosted by nasen, Whole School SEND leads the Universal SEND Services in partnership with the Education and Training Foundation (ETF) and the Autism Education Trust (AET).

Our director, Emily Walker is the Regional Lead for the East Midlands, South Yorkshire, and Humber (EMSYH). They are passionate about supporting all provision across the region to be ambitious, inspirational, and inclusive by design. Working closely with Local Authorities (LAs), Multi-Academy Trusts (MATs), Opportunity Areas, Teaching School Hubs, and both mainstream and specialist settings, they ensure the effective sharing of knowledge and expertise across the system.

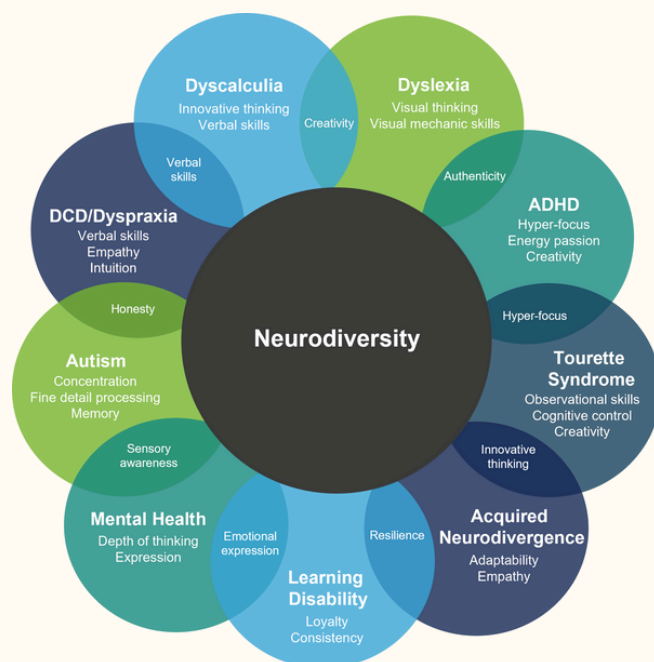
Make sure you check out their **free online SEND CPD units** - 19 units exploring some of the most commonly observed barriers to learning regardless of age, label or area of need.

They also have the Teacher Handbook: SEND, which is a free handbook, developed by Whole school SEND as a resource for teachers to use over time as they embed inclusive practice in their classrooms. It has been written for both primary, secondary and specialist colleagues: teaching assistants, teachers, senior leaders and headteachers. The handbook includes whole-school and whole-class approaches as well as subject-specific and condition-specific guidance.



Exploring Neurodiversity in Education

Neurodiversity has become a key focus in schools, reflecting the growing awareness and need to celebrate and support the diverse ways students think, learn, and engage. At LEARN SEND Hub, we've recognised this shift and have threaded the theme of neurodiversity through many of our presentations and training sessions. From leadership conferences to practical CPD workshops, our aim is to equip educators with the tools and understanding to create inclusive environments that meet the needs of all learners. By embracing neurodiversity, we can empower both students and staff to thrive.



Upcoming Training

TRAINING DURING JANUARY, FEBRUARY & MARCH



15/01/25

Using Lego play to support social skills



17/01/25

SEMH - The Bigger Picture



21/01/25

Tier 3: Middle Leaders SEND Leadership - A Tiered Approach



05/02/25

SEND Moderation: Scientific Skills



05/02/25

Emergency First Aid at Work



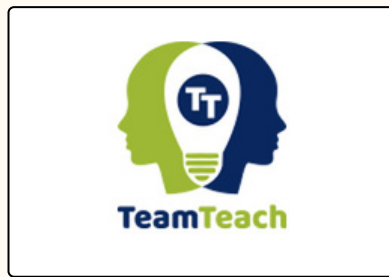
06/02/25

SEND Moderation: Computing



12/02/25

The Adaptive Teacher Pathway



04/03/25 & 07/03/25

Team Teach-Level 2



06/03/25

SEND Moderation: PSHE/RSHE



11/03/25

Spring term SEND Network meeting @ LEARN



12/03/25

Using Emotion Coaching to Support Relationships, Emotional Regulation and Behaviour



13/03/25

Meeting Complex Needs in EYFS in Mainstream Settings



Lincolnshire's Leadership Conference



The LEARN team recently attended Lincolnshire's Leadership Conference, hosted by L.E.A.D Professional Development. It was a fantastic day filled with inspiring presentations, valuable networking, and a chance to showcase what LEARN SEND Hub has to offer.

LEARN Director, Emily Walker delivered a session on Adaptive Teaching, while Ali Williams, Deputy Headteacher at Foxfields Academy, presented an insightful talk on SEMH. Both sessions were met with great enthusiasm and sparked meaningful discussions about inclusive education.

The conference featured incredible keynote speakers, including Robert Coe, Stuart Kime, Rachel Higginson, Margaret Mulholland, Kate Jones, and Diana Osagie, who shared inspiring insights into leadership and education.

Our LEARN and Whole School SEND stall was packed with resources from TTS, and it was wonderful to connect with education leaders from across Lincolnshire. We're proud to be part of events that bring together professionals to share best practices and strengthen SEND provision in schools.



Here's to continuing the conversation and building inclusive, supportive school communities!

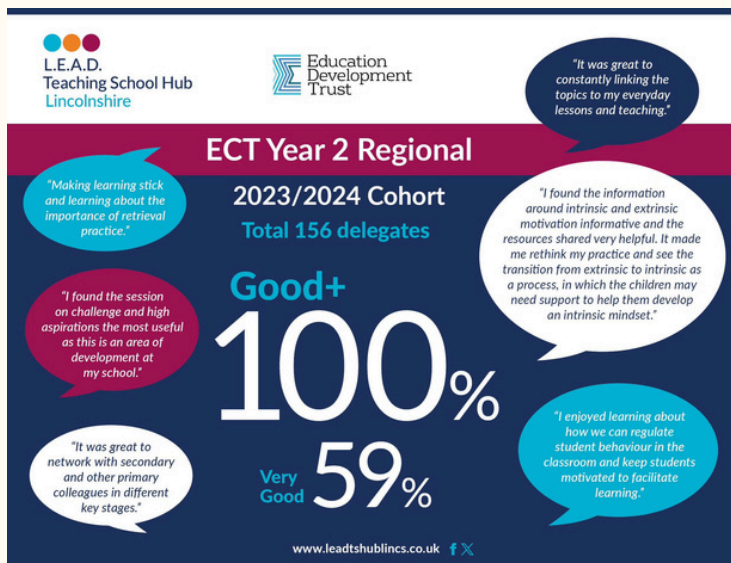
BOOK ADAPTIVE TEACHING HERE

Early Career Framework with LEAD

We are proud to be part of the facilitation team for LEAD Teaching School Hub, delivering the Early Career Framework across the region. This term we have delivered local and regional events, working with over 200 ECTs.

Here is some feedback from the latest regional event. If you have an ECT who is new to your school in the Spring term, please ensure they are registered for their induction:

tinyurl.com/3kyuab37



Follow us!



Please make sure that you follow us for all the latest news!



Our X page also shares lots of great information.

Work with us today

HAVE ANY QUESTIONS ABOUT WORKING WITH US?

Whether it's to complete a SEND Review in your setting, deliver whole school training from TA's to heads, or something more bespoke, get in touch!

LET'S CHAT!

@learnsendhub | enquiries@learsendhub.co.uk | 01400 659009

WWW.LEARSENDHUB.CO.UK